

SANTA BARBARA AIRPORT

Noise Advisory Program

PublicVue Orientation

July 10, 2019



What is PublicVue?

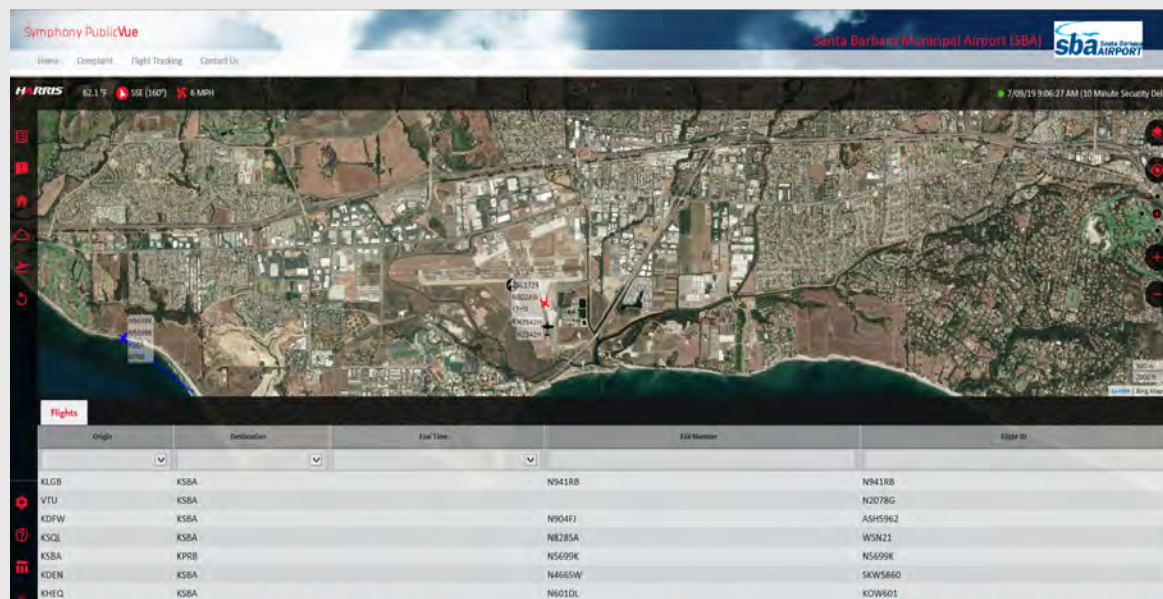
- Web-based noise complaint entry and flight tracking portal
- Follow, track, and review aircraft operations in the vicinity
- Directly input noise complaints
- Real time (with 10min security delay) and historical replay flight tracking options





PublicVue Features

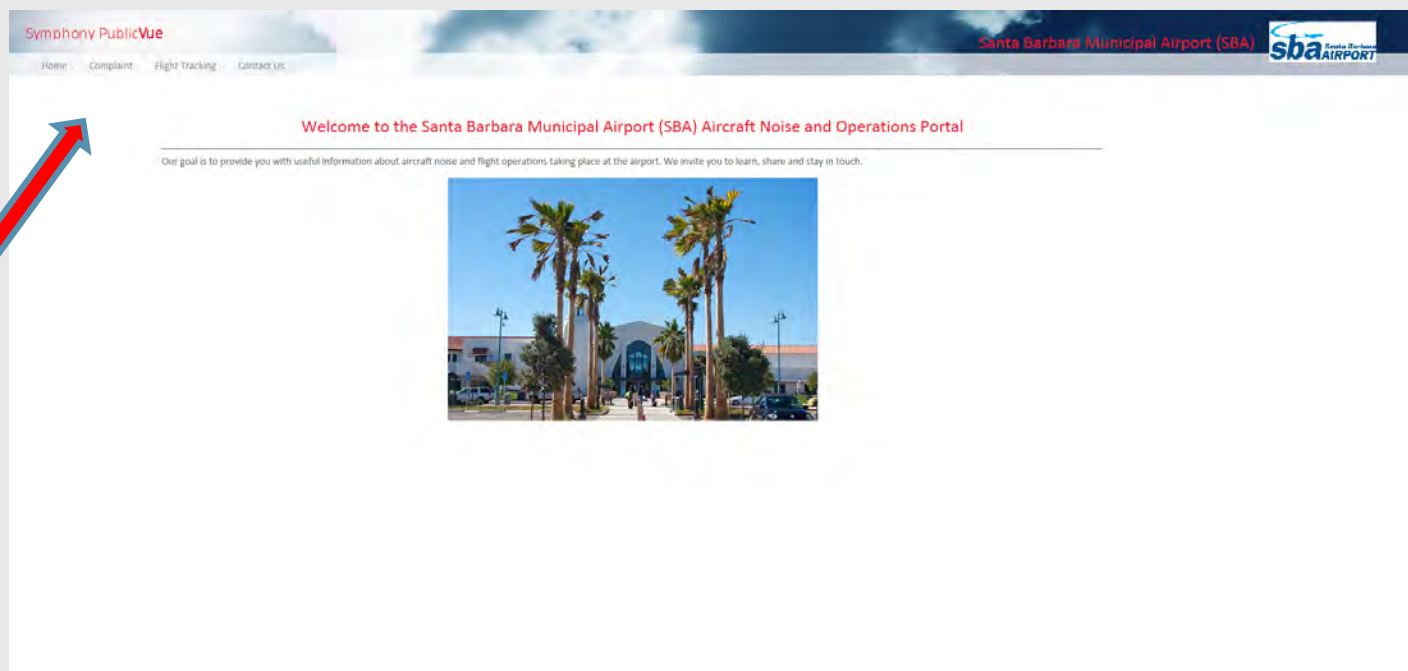
- Public access to data accuracy, transparency, and consistency
- Flight following can display full flight path and route of flight in the vicinity of specific location
- Usable on smartphones, tablets, and computers





PublicVue Homepage

Select 'Complaint'
to create an
account or enter a
noise complaint.






PublicVue Login

First time users must create an account.

Symphony PublicVue

Home Complaint Flight Tracking Contact Us

Santa Barbara Municipal Airport (SBA) 

Login


Please enter your **Login Name** and **Password** to get access to the complaint section. If you don't have a login account please use the registration link below to create a new one. If you already have a login account and don't remember your password please follow the directions in the link below for password recovery and assistance.

Username:

Password:

First time visitor? [Click here to register](#)

Can't remember your password? [Click here](#)






New User Registration

Symphony PublicVue

Home Complaint Flight Tracking Contact Us

Santa Barbara Municipal Airport (SBA) 

Registration

First Name: *

Middle Initial:

Last Name: *

Address Line 1: *

Address Line 2:

City: *

State:

Zip Code: *

Phone: *

Cell Phone:

Email: *

Choose a Login Name: *

Choose a Password *

Confirm Password *

←

Fill all required fields indicated by (*). Please double check for accuracy.



PublicVue Main Menu

Click 'Submit New' to enter a new noise complaint.

Symphony PublicVue

[Home](#) [Complaint](#) [Flight Tracking](#) [Contact Us](#)

Santa Barbara Municipal Airport (SBA)



COMPLAINT MENU

[Submit New](#)

[Review](#)

[Profile](#)

[Password](#)

[Logout](#)



Complaint

In this area you can enter a new complaint or review the status of one(s) you have previously submitted.
You can also update your personal information using the "Profile" menu and change your password using the "Password" menu.
Please select a item from the menu on the left.




New Complaint Entry

Fill in all required fields indicated by (*) and insure accurate date and time of disturbance. Select SBA as 'Complaint Airport'.

Symphony PublicVue

Home Complaint Flight Tracking Contact Us

Santa Barbara Municipal Airport (SBA) 

COMPLAINT MENU

Submit New

Review

Profile

Password

Logout

Complaint Entry

Date and time of disturbance: mm/dd/yyyy hh:mm:ss

Start

End

Complaint Airport: *


Primary Disturbance: *

Secondary disturbance:

Tertiary disturbance:

Comments: *

Response Requested: ☒





Review Complaint Status

Symphony PublicVue

Home Complaint Flight Tracking Contact Us

COMPLAINT MENU

- Submit New
- Review
- Profile
- Password
- Logout

Santa Barbara Municipal Airport (SBA)

sba Santa Barbara AIRPORT

Complaints List

Start Date/Time	End Date/Time	Primary Disturbance	Secondary Disturbance	Tertiary Disturbance	Complaint Comment	Complaint Status	Airport
6/10/2019 9:37:00 PM	none provided	Aircraft Off Course			Aircraft flew over H...	Recorded	

[View](#)

Click on [view](#) to review complaint data.



Review Complaint Status Details

Symphony PublicVue
Santa Barbara Municipal Airport (SBA)

Home
Complaint
Flight Tracking
Contact Us

COMPLAINT MENU

Submit New
Review
Profile
Password
Logout

Complaint Details

Date and time of disturbance: mm/dd/yyyy hh:mm:ss

Start

End

Complaint Airport: *

Primary disturbance: *

Secondary disturbance:

Tertiary disturbance:

Complaint Comments: *

Operator Comments:

[< Back to Complaint List](#)



Flight Tracking-Terms of Use

Symphony PublicVue
Santa Barbara Municipal Airport (SBA)

[Home](#)
[Complaint](#)
[Flight Tracking](#)
[Contact Us](#)

Terms and Conditions of Use

Web Site Terms and Conditions of Use

The following terms and conditions (the "Terms and Conditions") govern your use of PublicVue, and any content made available from or through this web site, including any subdomains thereof ("PublicVue" or the "Web site"). PublicVue is made available by Harris Corporation ("Harris," or "we" or "us"). We may change the Terms and Conditions from time to time, at any time without notice to you, by posting such changes on the Web Site.

BY USING PUBLICVUE YOU ACCEPT AND AGREE TO THESE TERMS AND CONDITIONS AS APPLIED TO YOUR USE OF PUBLICVUE. If you do not agree to these Terms and Conditions, you may not access or otherwise use PublicVue.

PublicVue is made up of various Web pages operated by Harris Corporation, 1650 Tysons Blvd, Suite 1700, McLean, VA 22102. These Terms and Conditions of Use apply to PublicVue and do not apply to the content of third parties. You agree to use the third party material only within the PublicVue Site. The PublicVue Site is offered to you conditionally on your acceptance without modification of the terms, conditions, and notices contained herein. Your use of the Web Site constitutes your agreement to all such terms, conditions and notices.

LIMITED LICENSE

You may access and view the content on the Web site on your computer or other device. Use of the Web Site and the services offered on or through the Web Site, are only for your personal, non-commercial use. We hereby grant you a nonexclusive, nontransferable license to access, view and use the Web site via the Internet and to view and make a copy of the materials, information and documents posted on the public portions of

DISCLAIMER OF WARRANTIES

THE WEB SITE, INCLUDING, WITHOUT LIMITATION, ALL SERVICES, CONTENT, FUNCTIONS AND MATERIALS PROVIDED THROUGH THE WEB SITE, ARE PROVIDED "AS IS," "AS AVAILABLE," WITHOUT WARRANTY OF ANY KIND, EITHER EXPRESS OR IMPLIED, INCLUDING, WITHOUT LIMITATION, ANY WARRANTY FOR INFORMATION, DATA, DATA PROCESSING SERVICES, UPTIME OR UNINTERRUPTED ACCESS, ANY WARRANTIES CONCERNING THE AVAILABILITY, PLAYABILITY, DISPLAYABILITY, ACCURACY, PRECISION, CORRECTNESS, THOROUGHNESS, COMPLETENESS, USEFULNESS, OR CONTENT OF INFORMATION, AND ANY WARRANTIES OF TITLE, NON-INFRINGEMENT, MERCHANTABILITY OR FITNESS FOR A PARTICULAR PURPOSE, AND WE HEREBY DISCLAIM ANY AND ALL SUCH WARRANTIES, EXPRESS AND IMPLIED. WE DO NOT WARRANT THAT THE WEB SITE OR THE SERVICES, CONTENT, FUNCTIONS OR MATERIALS PROVIDED THROUGH THE WEB SITE WILL BE TIMELY, SECURE, UNINTERRUPTED OR ERROR FREE, OR THAT DEFECTS WILL BE CORRECTED. WE MAKE NO WARRANTY THAT THE WEB SITE OR THE PROVIDED SERVICES WILL MEET USERS' REQUIREMENTS. NO ADVICE, RESULTS OR INFORMATION, WHETHER ORAL OR WRITTEN, OBTAINED BY YOU FROM US OR THROUGH THE WEB SITE SHALL CREATE ANY WARRANTY NOT EXPRESSLY MADE HEREIN. HARRIS CORPORATION ALSO ASSUMES NO RESPONSIBILITY, AND SHALL NOT BE LIABLE FOR, ANY DAMAGES TO, OR VIRUSES THAT MAY INFECT, YOUR EQUIPMENT ON ACCOUNT OF YOUR ACCESS TO, USE OF, OR BROWSING IN THE WEB SITE OR YOUR COPYING ANY MATERIALS, DATA, TEXT, IMAGES, VIDEO CONTENT, OR AUDIO CONTENT FROM THE WEB SITE. IF YOU ARE DISSATISFIED WITH THE WEB SITE, YOUR SOLE REMEDY IS TO DISCONTINUE USING THE WEB SITE.

WITHOUT LIMITATION OF THE ABOVE IN THIS SECTION, HARRIS INC, THE AIRPORT, AND ITS AFFILIATES, SUPPLIERS AND LICENSORS MAKE NO WARRANTIES OR REPRESENTATIONS REGARDING ANY PRODUCTS OR SERVICES PROVIDED VIA THE WEB SITE, AND HEREBY DISCLAIM, AND YOU HEREBY WAIVE, ANY AND ALL WARRANTIES AND REPRESENTATIONS MADE IN SERVICES, DOCUMENTS AND OTHERWISE ON THE WEB SITE WITH HARRIS OR ITS AGENTS. ANY PRODUCTS AND SERVICES PROVIDED VIA THE WEB SITE ARE PROVIDED BY HARRIS ARE "AS IS," EXCEPT TO THE EXTENT, IF AT ALL, OTHERWISE SET FORTH IN A LICENSE OR SALE AGREEMENT SEPARATELY ENTERED INTO IN WRITING BETWEEN YOU AND HARRIS OR ITS LICENSOR OR SUPPLIER.

JURISDICTION

These Terms and Conditions will be governed and be interpreted pursuant to the laws of the Commonwealth of Virginia, United States of America, notwithstanding any principles of conflicts of law. If any part of these Terms and Conditions is unlawful, void, or unenforceable, that part will be deemed severable and will not affect the validity and enforceability of any remaining provisions. Possible evidence of use of this site for illegal purposes will be provided to law enforcement authorities.

You agree that any legal action arising out of or relating to these Terms and Conditions must be filed in the state or federal courts in the Commonwealth of Virginia and you hereby consent and submit to the personal jurisdiction of such courts for the purposes any such legal action or proceeding.

Symphony PublicVue

Home

Complaint

Flight Tracking

Contact Us

Santa Barbara Municipal Airport (SBA)

sba

Santa Barbara AIRPORT

HARRIS

69.1 °F

SSE [150°]

6 MPH

6/18/19 2:57:53 PM (10 Minute Security Delay)

Flights

Origin	Destination	Tail Number	Flight ID
KDEN	KSBA	N874AS	SKW5308
KUAO	KSBA	N920NL	N920NL
KSTS	KSBA	N96FT	EDG96
KSMF	KSBA	N16511	VTE3606
KSFO	KSBA	N959SW	SKW5251
KLUF	KSBA	N908VA	N908VA
KOAK	KSBA	N853SA	WSN26



Flight Tracking-Flight Selection

Click on aircraft
to select flight.

Symphony PublicVue

Home Complaint Flight Tracking Contact Us

Santa Barbara Municipal Airport (SBA)

69.1 °F SSE [150°] 6 MPH

6/18/19 3:02:55 PM (10 Minute Security Delay)

SkyWest

Flight ID: SKW5251
Tail Number: N9595W
Origin: KSFO
Destination: KSB

Flights

Origin	Destination	Tail Number	Flight ID
KDEN	KSBA	N874AS	SKW5308
KUAAO	KSBA	N920NL	N920NL
KSTS	KSBA	N96FT	EDG96
KSMF	KSBA	N16511	VTE3606
KSFO	KSBA	N9595W	SKW5251
KLUF	KSBA	N908VA	N908VA
KOAK	KSBA	N853SA	WSN26



Flight Tracking-Flight Selection Details

Symphony PublicVue

Home Compliant Flight Tracking Contact Us

Santa Barbara Municipal Airport (SBA) sba Santa Barbara AIRPORT

69.1 °F SSE [150] 6 MPH 6/18/19 3:13:27 PM (10 Minute Security Delay)

Properties

Flight ID: N920NL
 Tail Number: N920NL
 Flight Type: Arrival
 AC Type: CS25
 ICAO: IFR
 Airline: 11921185
 ADS Code: ACBF61
 STAR:

Airport

Origin: KUAO
 Departure Gate:
 Destination: KSBA
 Arrival Gate:
 Runway:
 Departure Fix: GNNET

Position

Speed: 169 mph

Flights

Origin	Destination	Tail Number	Flight ID
KSEE	KSBA	N231CP	N231CP
VTU	KIZA	N656BC	N656BC
KUAO	KSBA	N920NL	N920NL
KSTS	KSBA	N96FT	EDG96
KSMF	KSBA	N16511	VTE3606
KCMA	VTU	N206AZ	N206AZ
VFR	VFR	N35TB	N35TB


Select red exclamation (!) button to log complaint about selected flight.



Flight Tracking-Creating a Complaint

Symphony PublicVue

Home Complaint Flight Tracking Contact Us

Santa Barbara Municipal Airport (SBA) 

6/18/19 3:15:04 PM (10 Minute Security Delay)

69.1°F SSE (150°) 6 MPH

Create Complaint

Complaint

Disturbance Type: *

Time of Disturbance Start: * 06/18/2019 15:14

Time of Disturbance End: *

Comment: *

Response Requested: ☒

Flight Information

Airport: *

Flight ID: N920NL

Create Complaint Cancel


Flights

Origin	Destination	Tail Number	Flight ID
VTU	KIZA		N656BC
KUAD	KSBA		N920NL
KSTS	KSBA	N96FT	EDG96
KSMF	KSBA	N16511	VTF3606
KCMA	VTU		N206AZ
VFR	VFR	N35TB	N35TB
KLUF	KSBA	N908VA	N908VA
VFR	VFR	N656BC	N656BC


Complete all fields marked with (*).



Letters Issued to Flight Operator



City of Santa Barbara
Santa Barbara Airport



Month 00, 2019

Attn: Chief Pilot or Fleet Manager,

Thank you for flying into Santa Barbara Airport (SBA). I am writing in support of the SBA noise abatement program. We provide notification to aircraft operators when SBA has received noise complaints that correlate with flight operations that did not fly the SBA noise abatement procedure for Runway 7/25.

SBA maintains a FAA designated voluntary noise abatement procedure for Runway 25 (visual approach). This procedure requests that aircraft on approach to Runway 25 remain offshore until approximately two miles from the Airport, intercept a modified base to final approach over the open space west of More Mesa, and thus avoid unnecessary residential over-flight over the noise sensitive communities of Hope Ranch and More Mesa. (See below for visual procedures)

The majority of flights are able to follow this procedure. However, on the date and time below we have record of a flight by (NXXXX) that did not fly this noise abatement procedure: 00:00:0000 at 00:00

We send this information to provide noise abatement approach education to pilots who may be unaware of this procedure. We request that whenever safety permits, this procedure be followed.

Below you can find information regarding our voluntary noise abatement program.

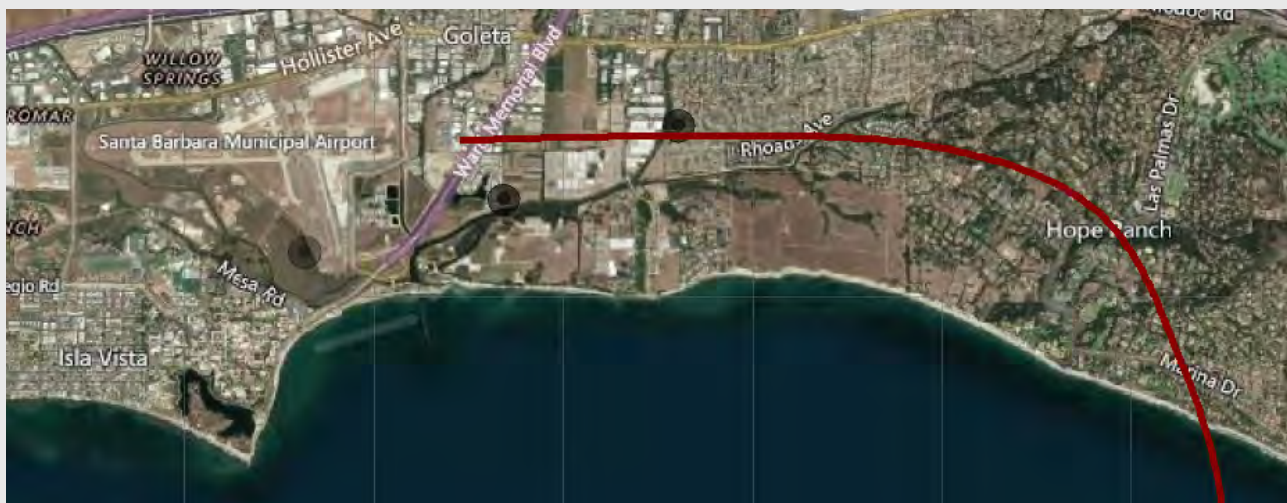
Procedures for Runway 25 visual noise abatement approach:
<https://www.santabarbaraca.gov/civicax/filebank/blobdload.aspx?BlobID=41173>

Complete information regarding SBA's noise abatement program:
<https://www.santabarbaraca.gov/depts/flies/about/inside/sbasnoiseabatement.asp>

Thank you for your efforts distributing this information to pilots flying into SBA. We greatly appreciate your support.

Sincerely,

David Reed
 Senior Airport Operations Specialist
 City of Santa Barbara, Airport
 805-692-6077 Dreed@SantaBarbaraCA.gov





LIVE DEMO
