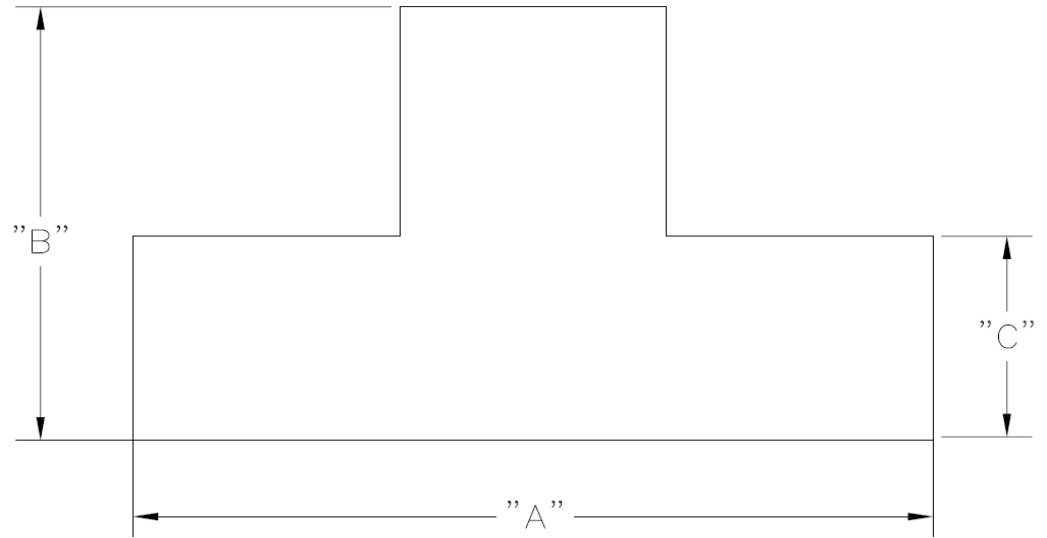


Santa Barbara Municipal Airport
T-Hangar As-Built Dimensions

Hangar Space	Vertical Clearance at Hangar Door	Interior Vertical Clearance*	"A" Bay Width	"B" Total Bay Depth	"C" Bay Wing Depth
Hangar 9					
N1	13'-11"	13'-7"	41'-7"	34'-4"	17'-3"
N2	13'-11"	13'-7"	41'-4"	34'-4"	17'-3"
N3	13'-11"	13'-7"	41'-7"	34'-4"	17'-3"
N4	13'-11"	13'-7"	41'-7"	34'-4"	17'-3"
N5	13'-11"	13'-7"	41'-7"	34'-4"	17'-3"
N6	13'-11"	13'-7"	41'-7"	34'-4"	17'-3"
N7	13'-11"	13'-7"	41'-7"	34'-4"	17'-3"
N8	13'-11"	13'-7"	41'-7"	34'-4"	17'-3"
N10	13'-11"	13'-7"	41'-4"	34'-4"	17'-3"
Hangar 8					
C1	13'-11"	13'-7"	41'-4"	34'-5"	17'-3"
C2	13'-11"	13'-7"	41'-7"	34'-4"	17'-3"
C3	13'-11"	13'-7"	41'-7"	34'-4"	17'-3"
C4	13'-11"	13'-7"	41'-7"	34'-4"	17'-3"
C5	13'-11"	13'-7"	41'-7"	34'-4"	17'-3"
C6	13'-11"	13'-7"	41'-7"	34'-4"	17'-3"
C7	13'-11"	13'-7"	41'-7"	34'-4"	17'-3"
C8	13'-11"	13'-7"	41'-4"	34'-5"	17'-3"
Hangar 7					
S1	13'-11"	13'-7"	41'-4"	33'-8"	16'-7"
S2	13'-11"	13'-7"	41'-8"	34'-4"	17'-3"
S3	13'-11"	13'-7"	41'-8"	34'-4"	16'-7"
S4	13'-11"	13'-7"	41'-8"	34'-4"	17'-3"
S5	13'-11"	13'-7"	41'-8"	34'-4"	17'-3"
S6	13'-11"	13'-7"	41'-8"	34'-4"	17'-3"
S7	13'-11"	13'-7"	41'-4"	34'-4"	17'-3"



Plan View of Hangar Space with Dimension Lines