



SANTA BARBARA AIRPORT

TERMINAL IMPROVEMENT PROJECT PREFERRED CONCEPT REVIEW

Airport Commission – May 17, 2023



Agenda

- Team
- Purpose
- Airport Overview
- Background
- Terminal Improvement Project
- Project Schedule and Next Steps
- Questions and Comments





Airport Team

Chris Hastert, CM
Airport Director

Sara Iza, AICP
Development Manager

Brad Klinzing, PE
Supervising Engineer

Jessica Metzger, AICP
Project Planner

CORGAN 

nine
teen
six
ARCHITECTS
196

Design Work Group

Dan Glaeser – Airport
Commission

Dennis Whelan
Architectural Board of
Review - City

Cassandra Ensberg
Historic Landmarks
Commission - City

Cecilia Brown Design Review
Board - Goleta

Alex Pujo
South County Board of
Architectural Review - County

Bob Kupiec America - Institute
of Architects



Purpose

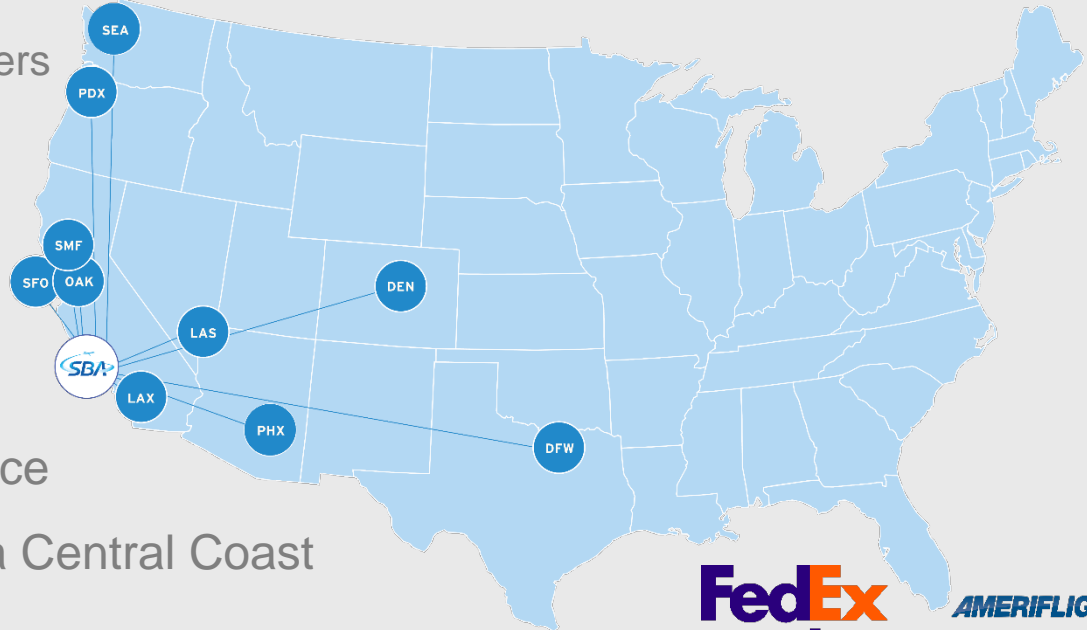
Review the Terminal Improvement Project
Preferred Conceptual Design





SBA Overview

- Primary Commercial Service – Small Hub
 - One Million Annual Passengers
 - 100,000 Annual Operations
 - 150 Based Aircraft
- Three Runways
- General Aviation
- Flight Training & Maintenance
- Largest airport on California Central Coast





Background

- 2017 Master Plan
- 20-year planning horizon
- Adjusts to changing conditions in the region and industry
- Terminal Improvement Project
 - Enplaned passengers are projected to grow at 4.8% each year

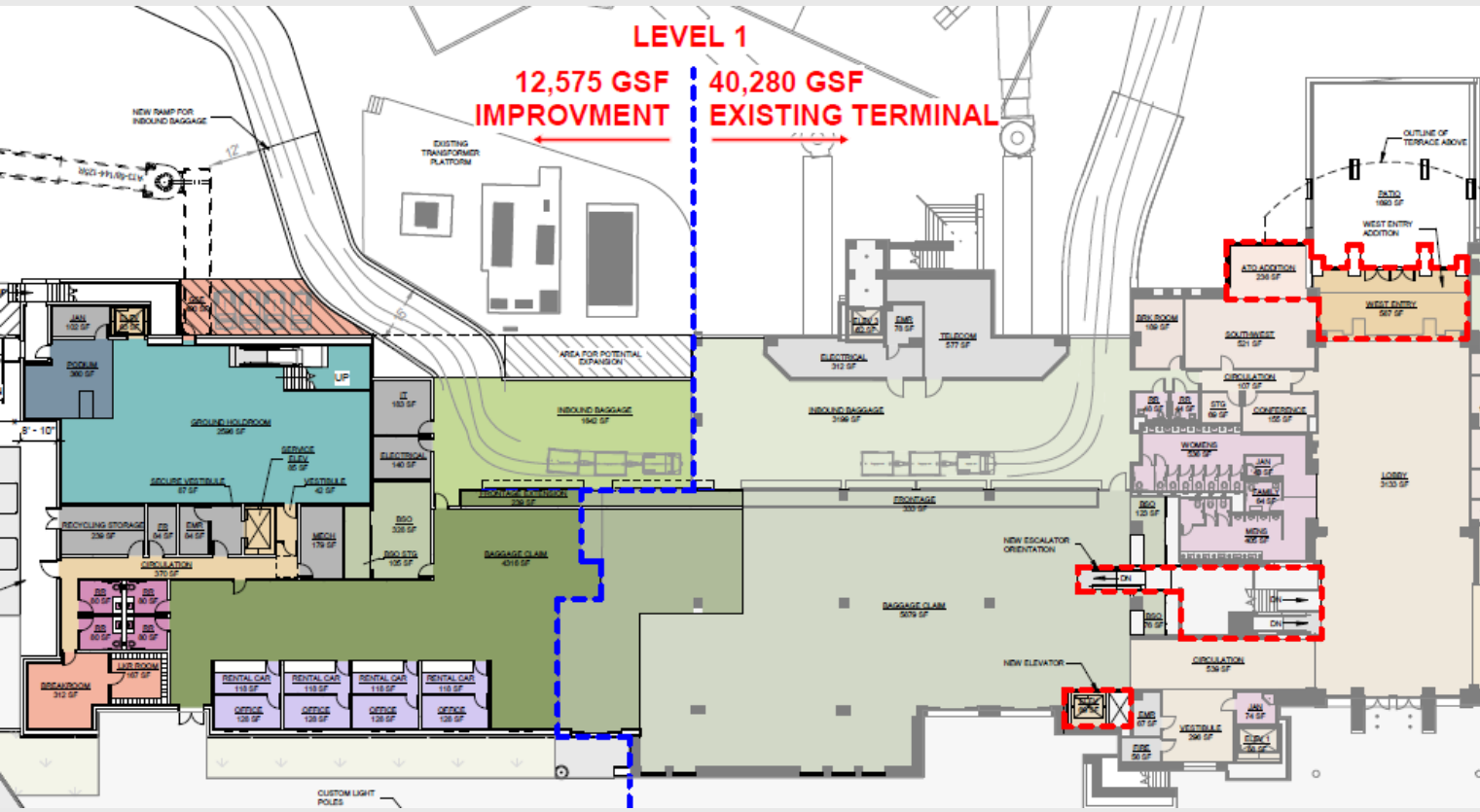




Design Elements

- Add 2+ gates and holdroom space
- Additional food, beverage, and retail space
- Improve baggage claim area
- Additional departure space
 - Ticketing and self check-in
 - TSA security





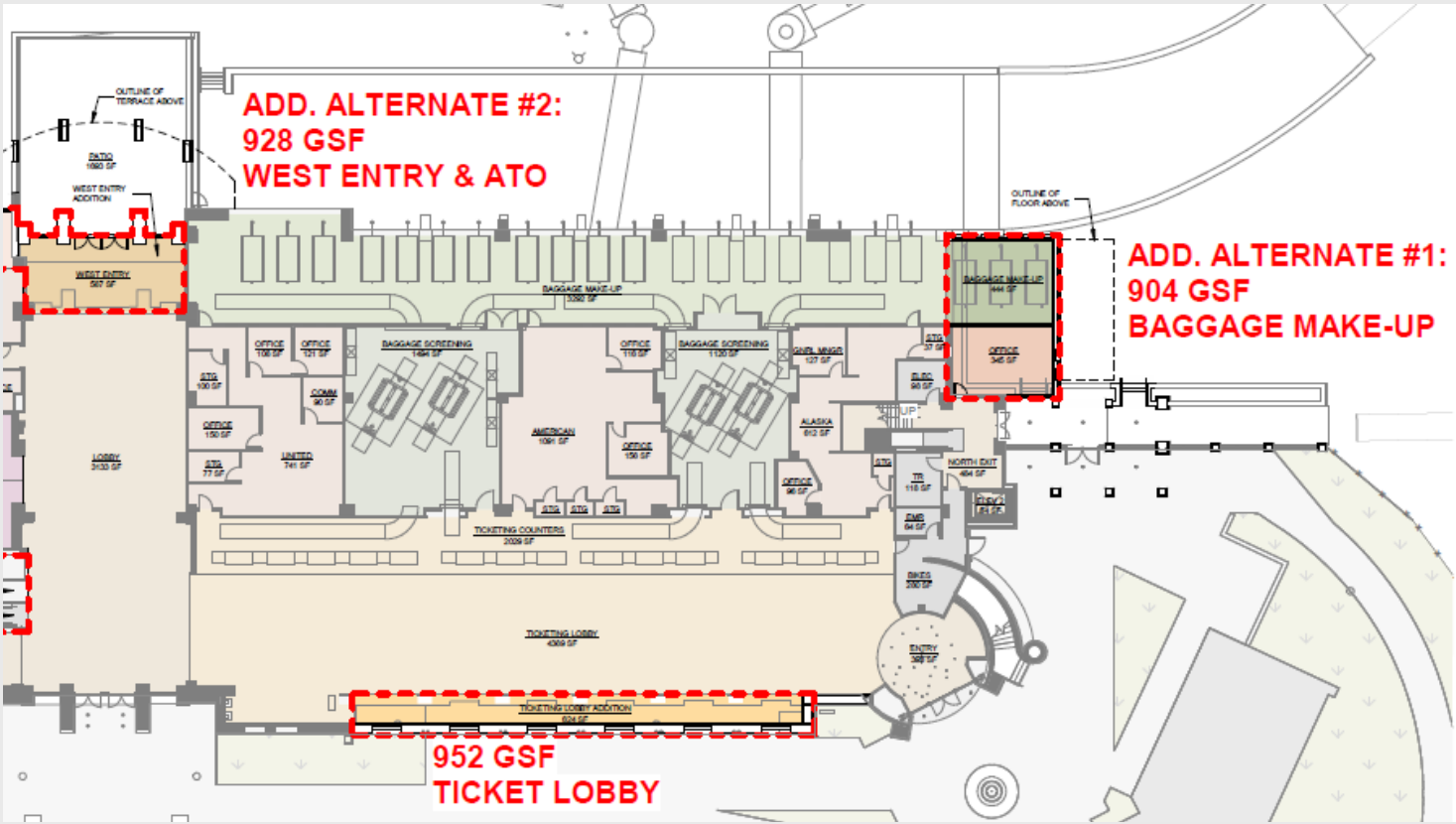
LEVEL 1

**12,775 GSF
IMPROVEMENT**

**40,280 GSF
EXISTING TERMINAL**

PROGRAM LEGEND

- SSCP/TSA
- Concession
- Restrooms
- Domestic Holdroom
- Other Holdroom Elements
- Mechanical/Electrical
- Circulation
- Security Queuing



PROGRAM LEGEND

- SSCP/TSA
- Concession
- Restrooms
- Domestic Holdroom
- Other Holdroom Elements
- Mechanical/Electrical
- Circulation
- Security Queuing

**ADD. ALTERNATE #2:
928 GSF
WEST ENTRY & ATO**

**ADD. ALTERNATE #1:
904 GSF
BAGGAGE MAKE-UP**

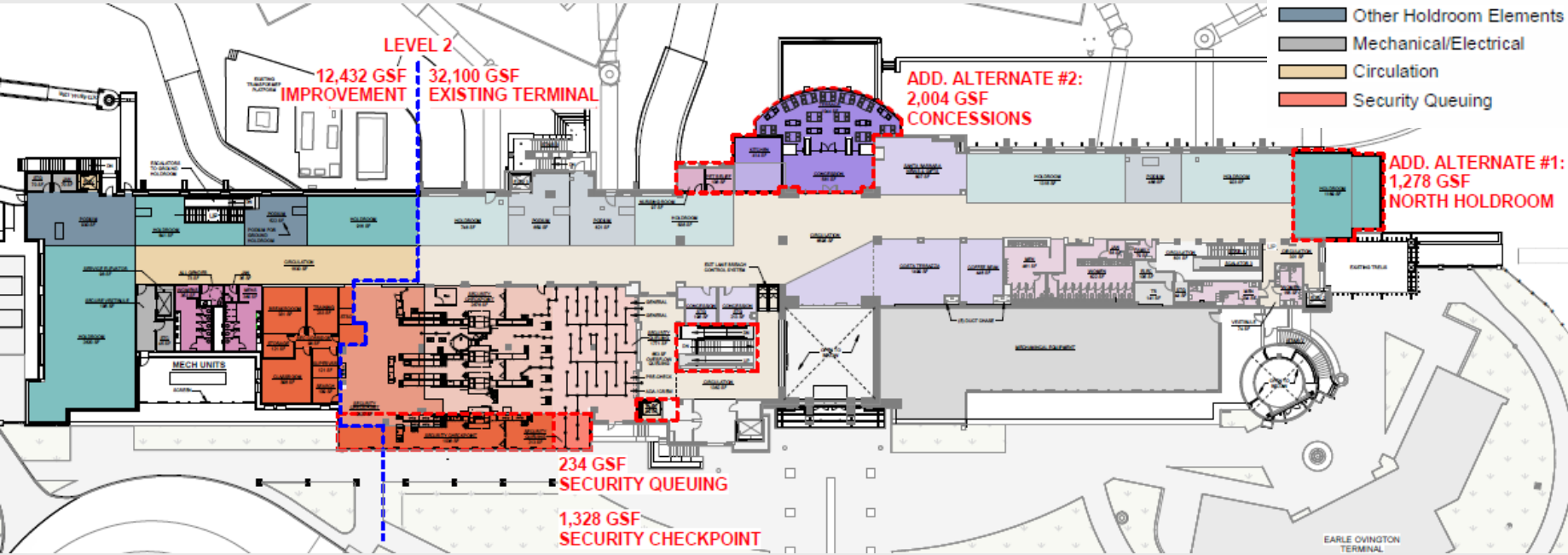
**952 GSF
TICKETING LOBBY**

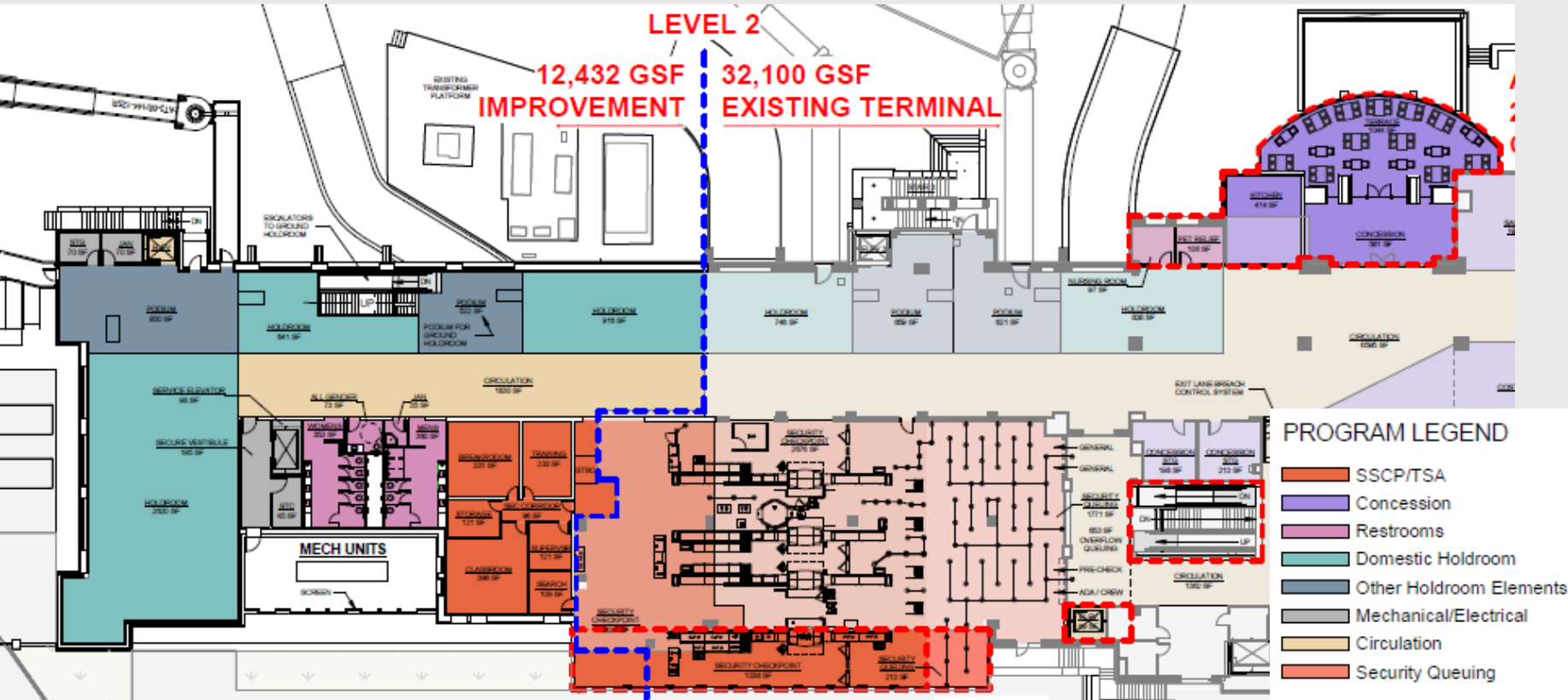


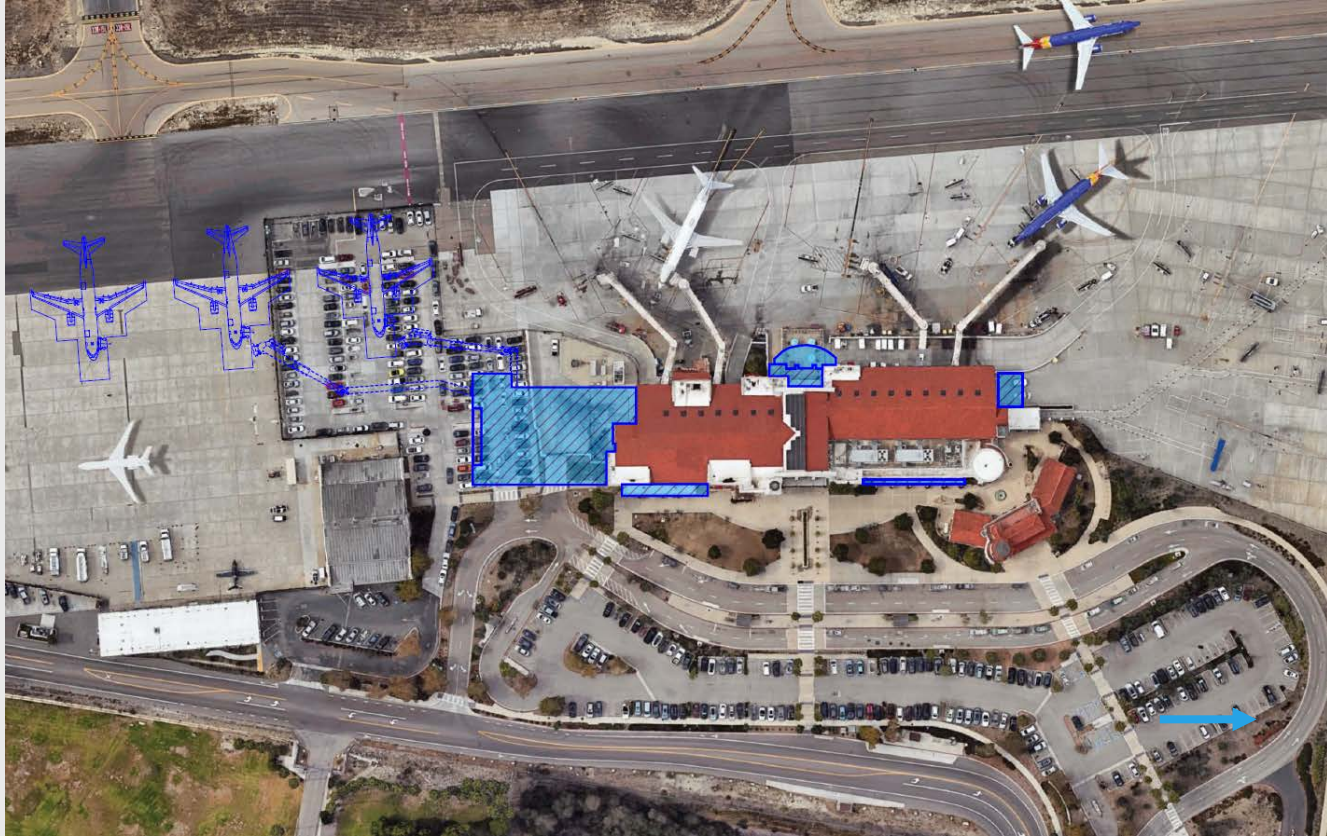
Site Plan - Level 2

PROGRAM LEGEND

- SSCP/TSA
- Concession
- Restrooms
- Domestic Holdroom
- Other Holdroom Elements
- Mechanical/Electrical
- Circulation
- Security Queuing









Existing Terminal





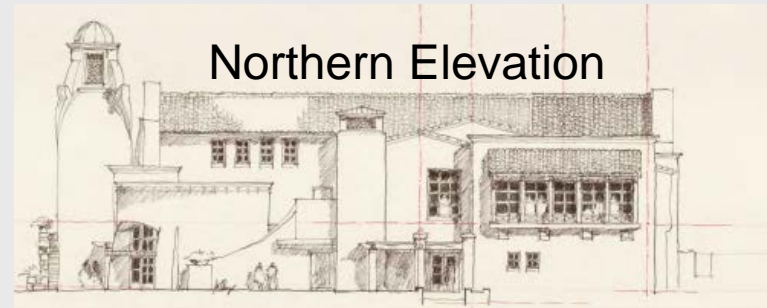
Front of Terminal



Airside



Northern Elevation



Southern Elevation

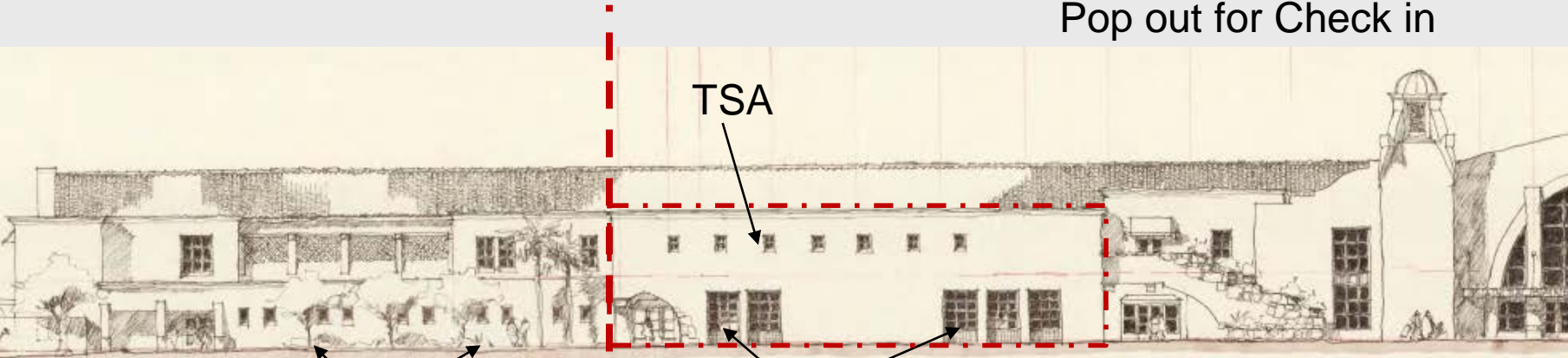




Pop out for Baggage Claim



Pop out for Check in



TSA

Rental Car Kiosks

Additional Baggage
Claim Windows

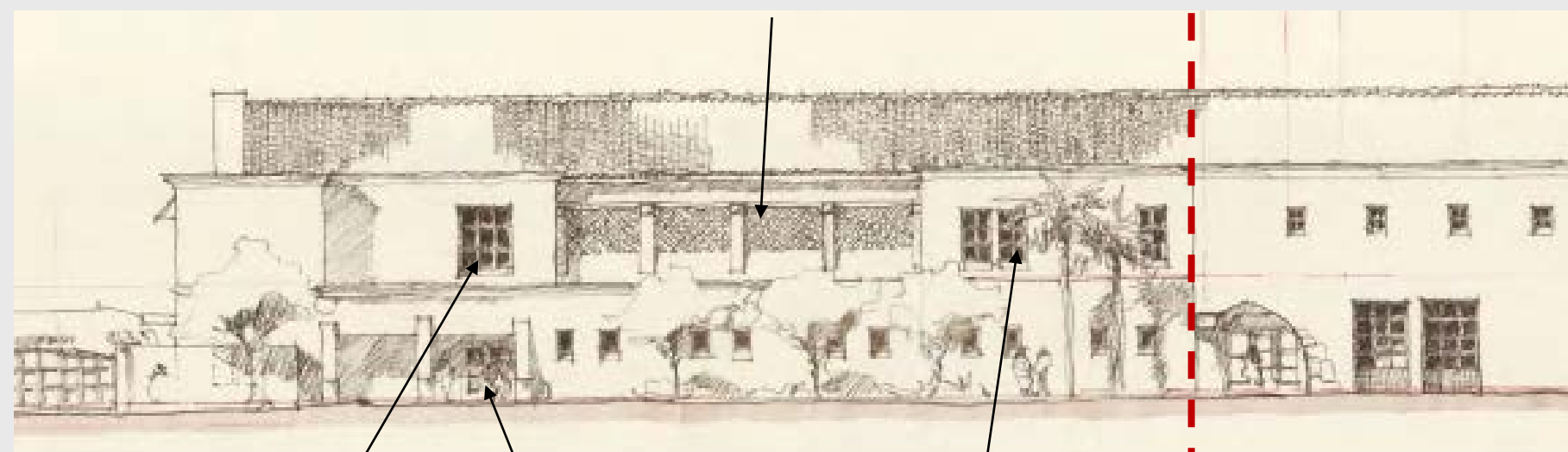


Mechanical

Holdroom

Exit to Rental Cars

TSA Offices





Holdroom

Concessions

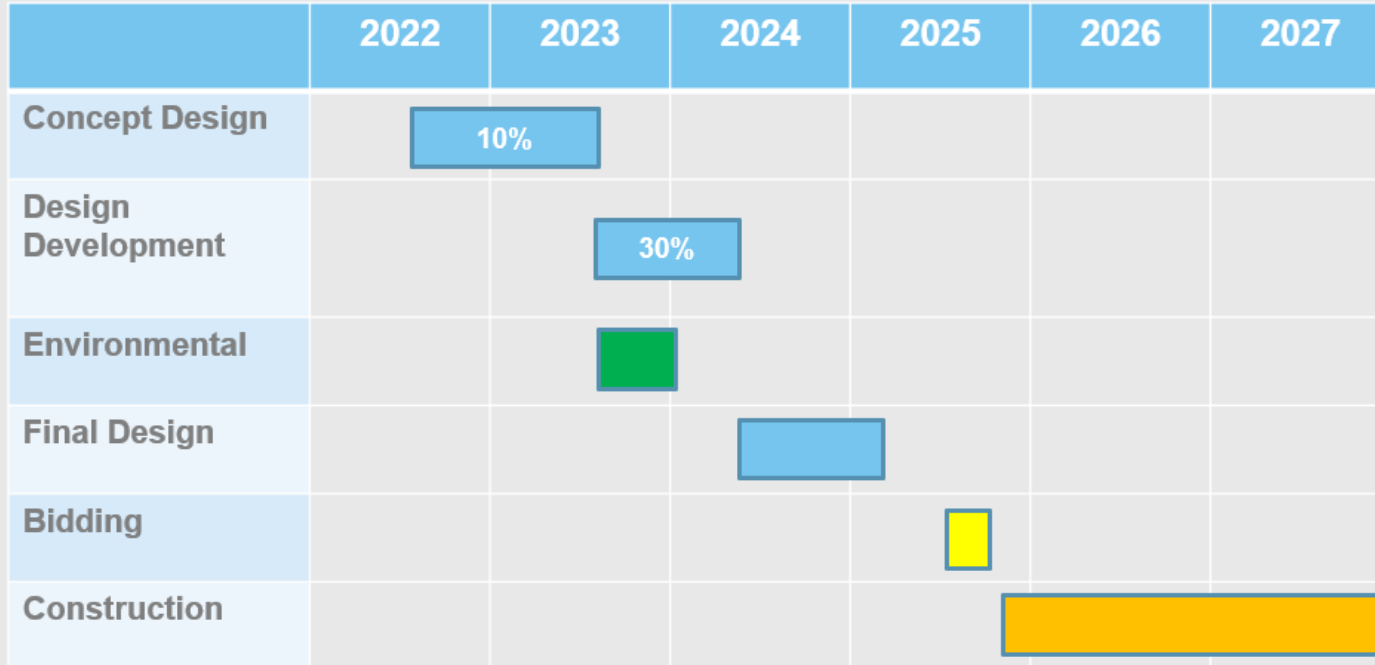
Holdroom



Mechanical and Equipment



Project Schedule and Next Steps



2023

Architectural Board of Review
Concept Review

Council Design Development
Contract Approval

Planning Commission
Coastal Development Permit



Questions and Comments?



Sign up for updates on the
Terminal Improvement
Project at:
FlySBA.com/TIP



Photograph by Lynn Houston © SBA 2011



Background





General Design Elements

- Design will be completed in phases
- Needs assessment:
 - Traffic, parking, and circulation study
 - Air Passenger Study
 - Airline Schedule Study
 - Interviews with stakeholders
- Design Guidelines
- Stormwater Management Program
- Future Expansion
- Green Building Policy (net zero, solar, battery, ParkSmart)



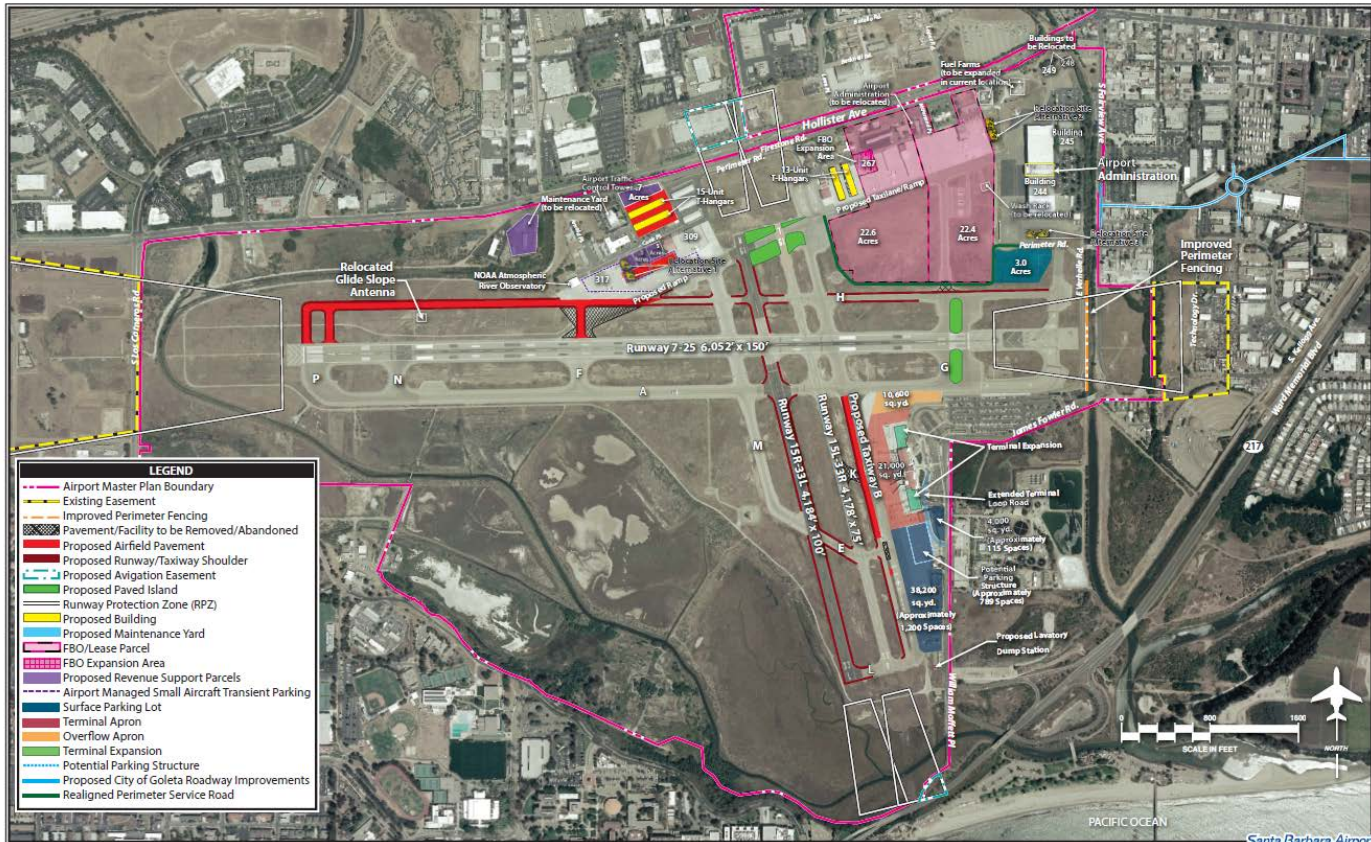


Terminal
Expansion

Extended
Terminal Loop
Road

Parking
Structure

2017 Master Plan Recommended Concept





LEGEND	
	Airport Property Line
	Runway Visibility Zone (RVZ)
	Pavement to be Removed/Abandoned
	Proposed Airfield Pavement
	Proposed Taxiway Shoulder
	Taxiway Centerline
	Surface Parking Lot
	Terminal Apron
	Overflow Apron
	Terminal Expansion
	Potential Parking Structure

2017 Master Plan Recommended Concept



Guiding Principles

- Safety and Security
- Economic Vitality
- Transportation Diversity
- Community
- Sustainability
- Environmental Preservation
- Cultural Resource Protection





2017 Master Plan Projects

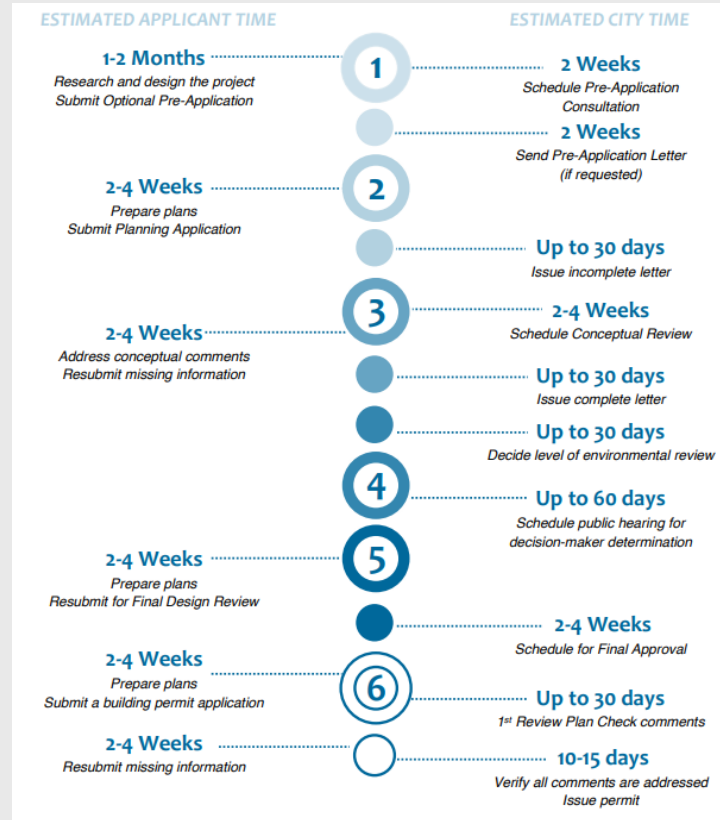
- Terminal Improvement Project
 - Enplaned passengers are projected to grow at 4.8% each year
- General Aviation Redevelopment
- Taxiway H





Review Path

- Terminal addition design approval from the Architectural Board of Review (15 months)
 - Occur after Public Outreach





Environmental Review

- Both projects included in the 2017 Airport Master Plan EIR
- Coastal Development Permit required
- Environmental Assessment (EA) required
- EA process to commence at 25% design





Other Airport Projects

- Sea-level Rise Adaptation Plan
- Drainage Plan
- Taxiway Rehabilitation
- Pavement Condition Index Study
- Bldg 257 Apron and Hangar 4 Apron Rehabilitation



Phases of Project

- Terminal and Parking Options

