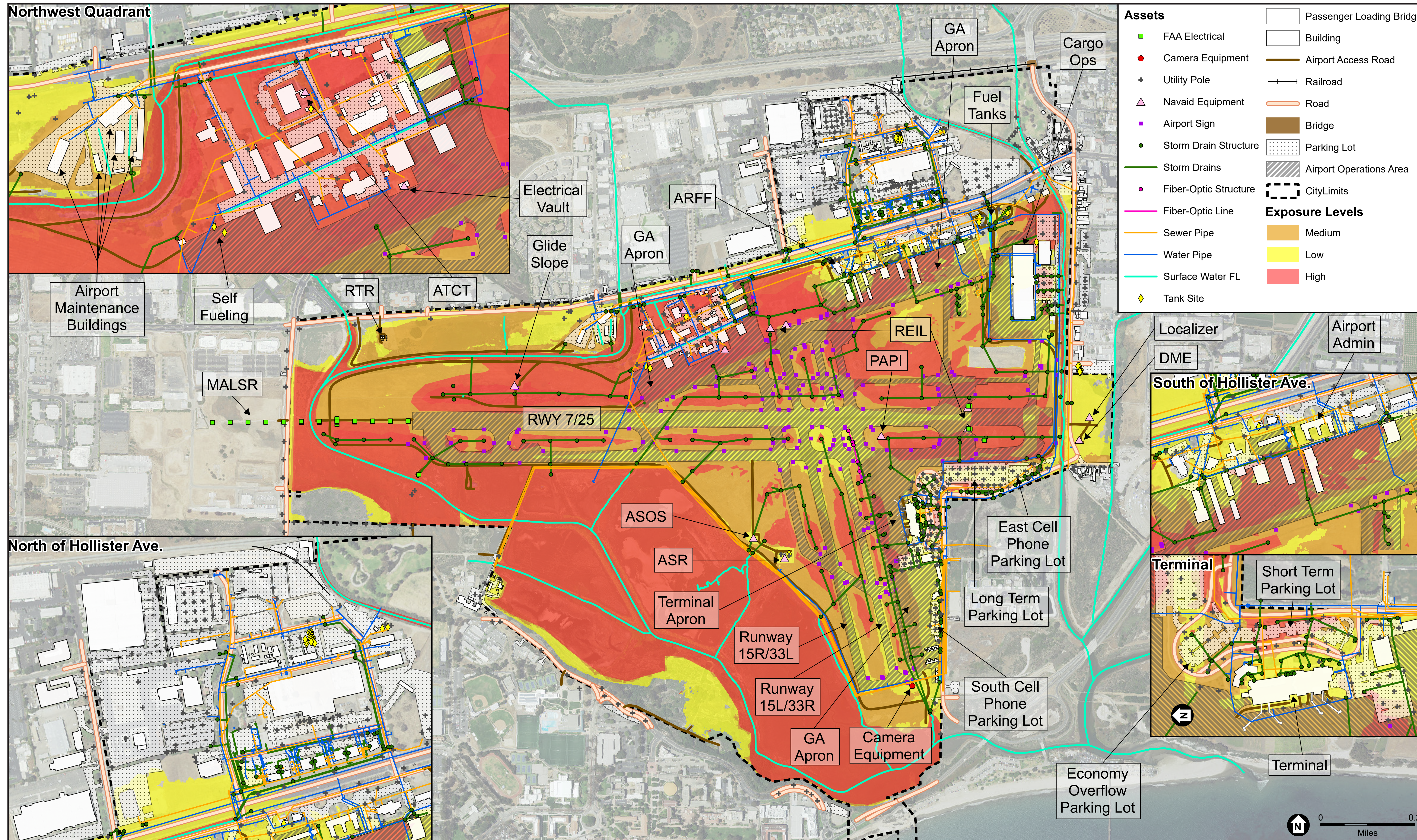


# SBA Flood Vulnerability



## Flood Threshold Probability Per Year

0 ft SLR  
Past Precipitation  
**7% Chance**  
Airport Closure

0 ft SLR  
Future Precipitation  
**21% Chance**  
Airport Closure

0.8 ft SLR  
(about 2048)  
**21% Chance**  
Airport Closure

2.5 ft SLR  
(about 2076)  
**61% Chance**  
Airport Closure

6.6 ft SLR  
(about 2130)  
**100% Chance**  
Airport Closure