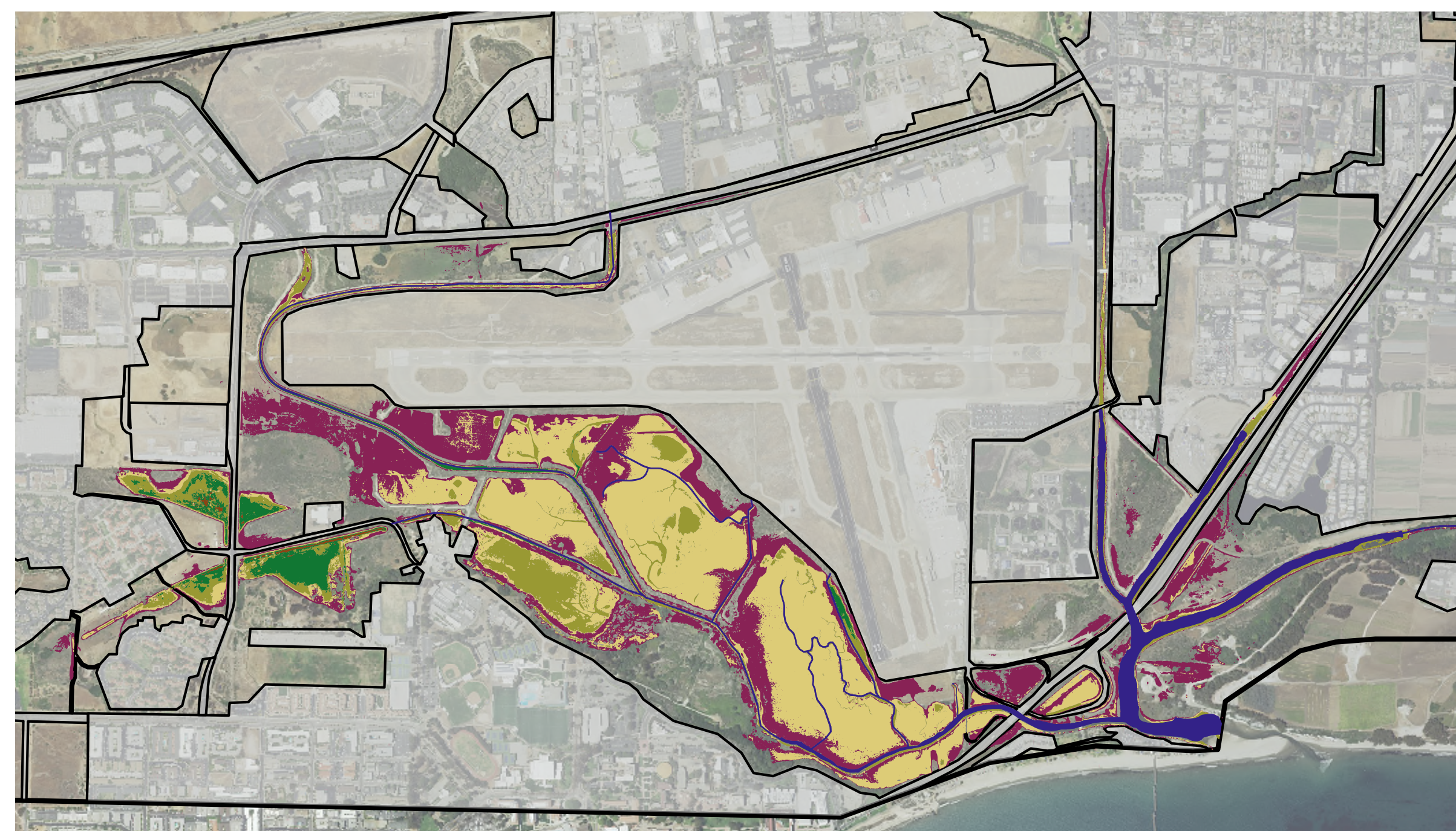
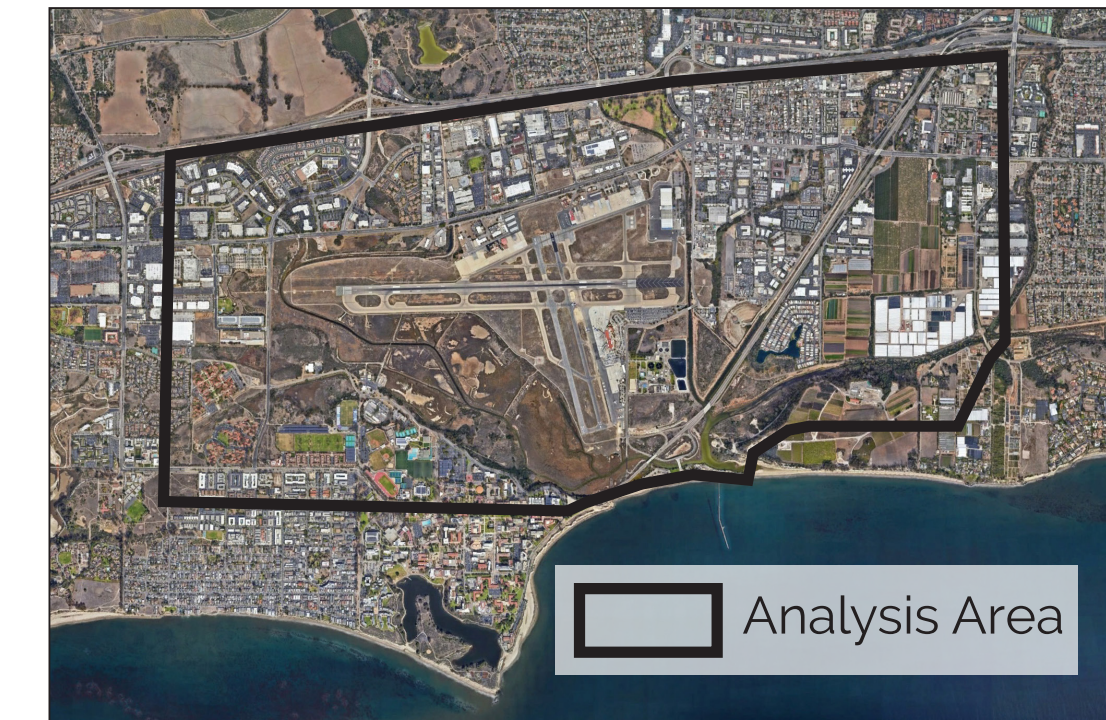
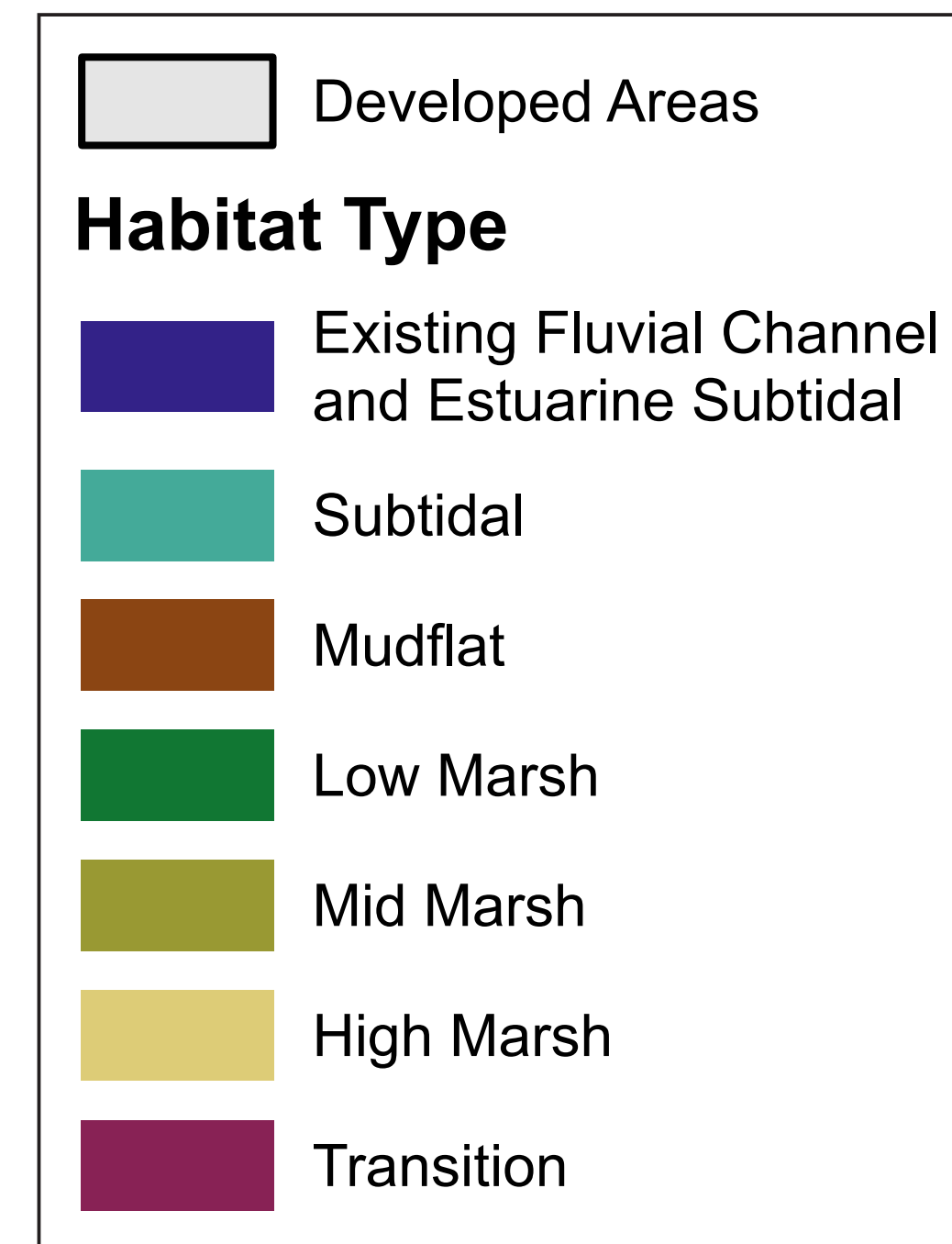
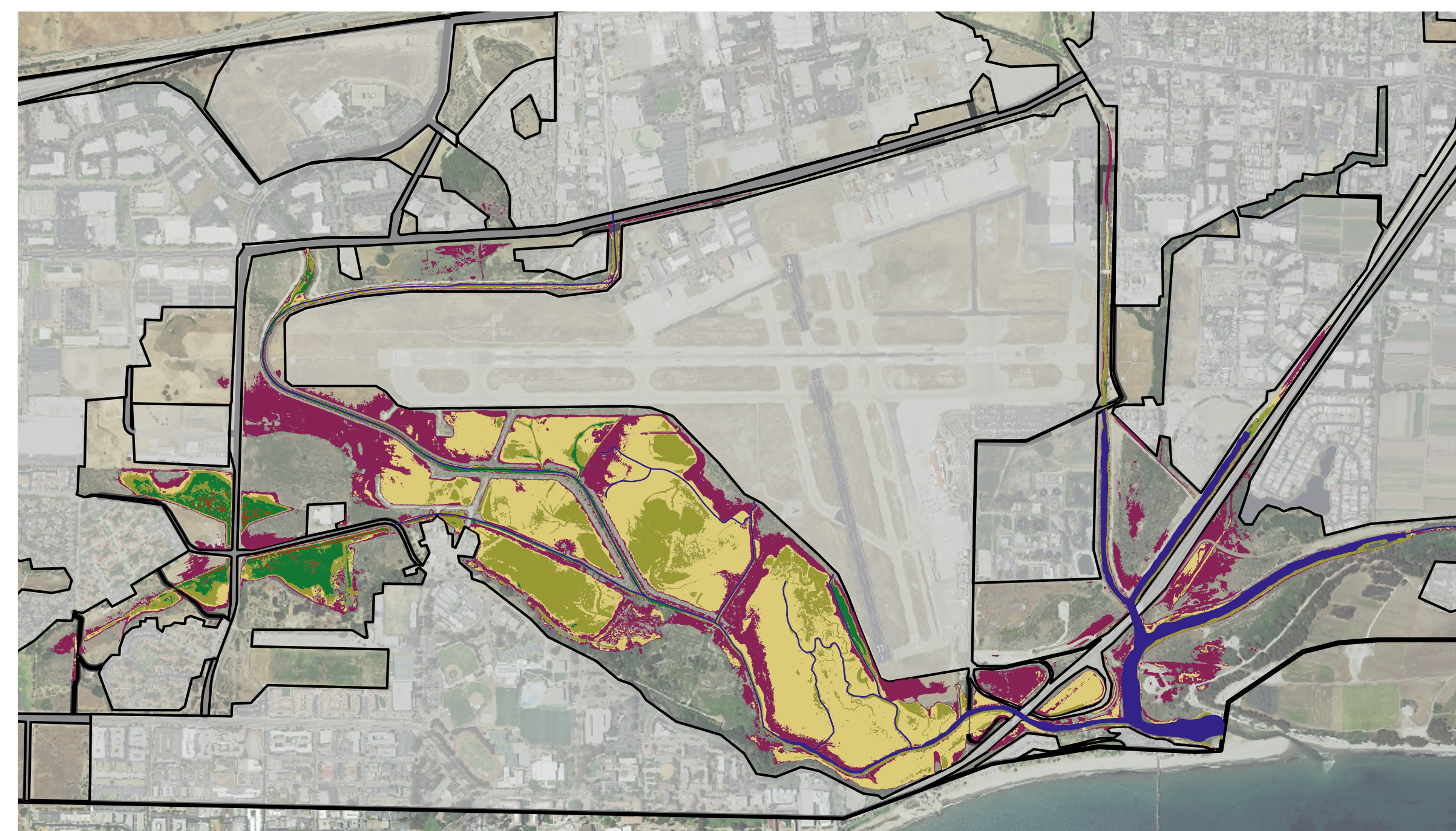


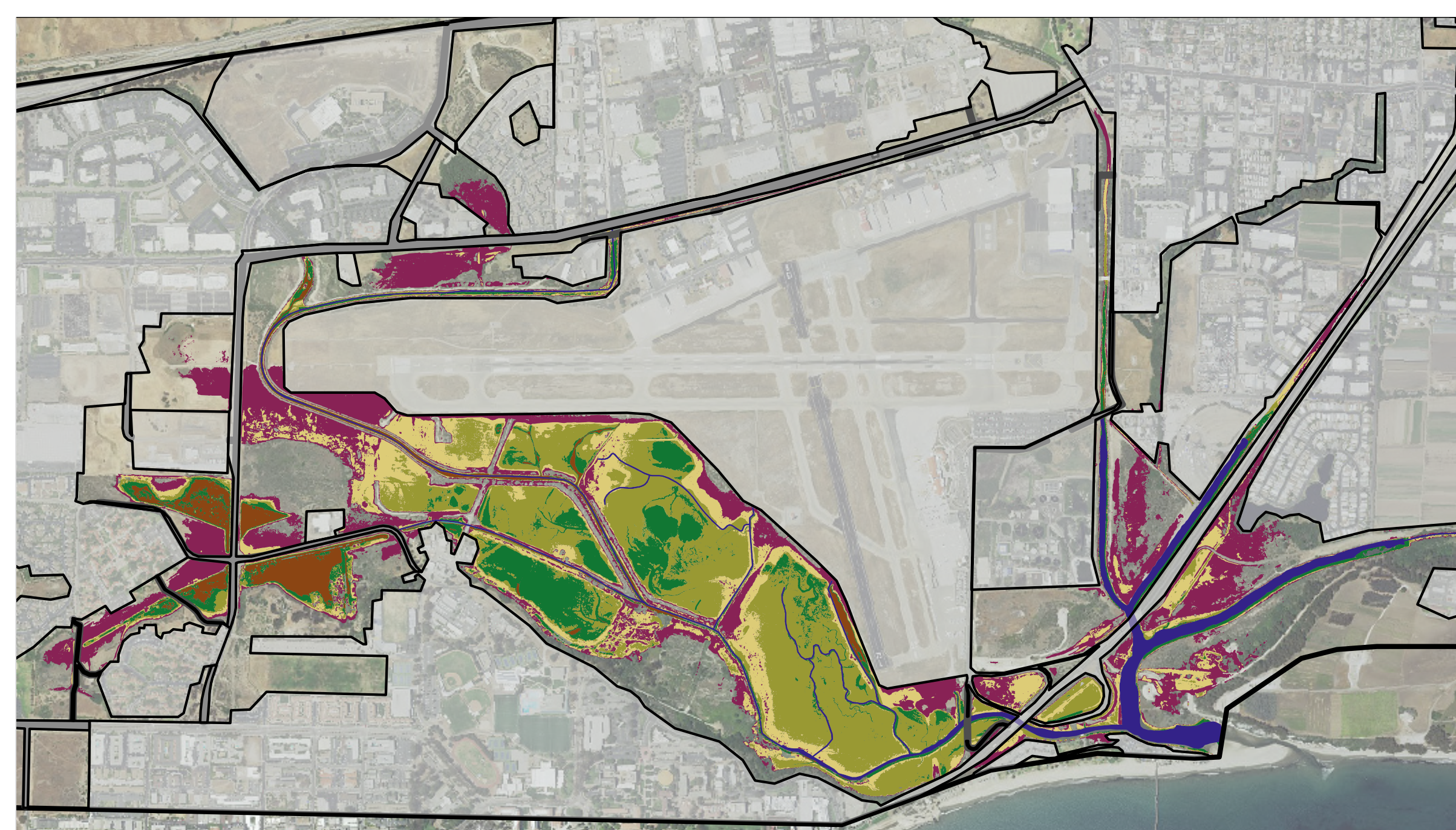
# Goleta Slough Habitat Change with Sea Level Rise



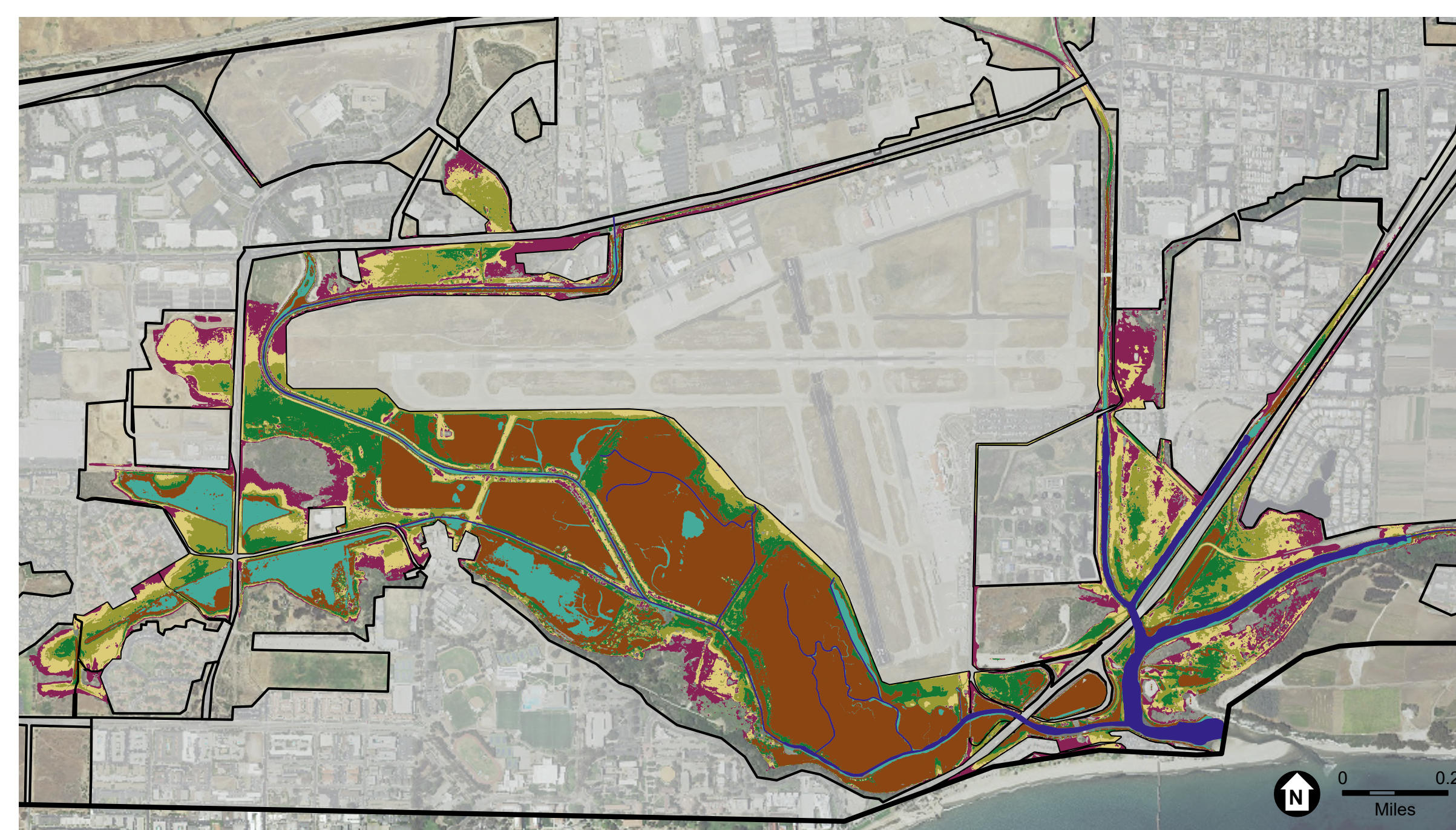
**0 ft SLR (Current)**  
Slough is predominately high marsh and transitional habitat



**0.8 ft SLR (2057)**  
Slough may become predominately mid marsh and high marsh habitat



**2.5 ft SLR (2096)**  
Slough may become predominately low marsh and mid marsh habitat, marsh may establish in uplands



**6.6 ft SLR (2150)**  
Slough may become predominately mudflat and subtidal habitat, low to high marsh may establish further inland

